

The background of the slide is a light-colored map of Indianapolis, Indiana. A red line, representing the INDYGo Red Line transit route, runs vertically through the center of the map. Various street names and landmarks are visible on the map, including "FALL CREEK", "22ND ST", "18TH ST", "14TH ST", "9TH ST", "VERMONT ST", "Downtown Transit Center", "Indianapolis (IUPUI)", "Hospital", "Community College", and "PARK AVE". The map also shows green areas representing parks and blue lines for other transit routes.

INDYGo RED LINE

STAKEHOLDER ENGAGEMENT

QUARTERLY MEETING

11.16.2016

I) WELCOME AND INTRODUCTIONS

JUSTIN STUEHRENBURG

II) PRESENTATION

JOHN MARRON

III) DISCUSSION, QUESTION, AND ANSWERS

RED LINE TEAM

IV) GEOGRAPHIC BREAKOUTS

RED LINE TEAM

R E D

RED LINE



INDYGO RED LINE

STAKEHOLDER ENGAGEMENT

QUARTERLY MEETING

11.16.2016

WHAT IS BRT? LIGHT RAIL ON TIRES

Bus Rapid Transit (BRT) is one of the technologies that could be used to implement Rapid Transit Service in key, heavily traveled corridors. BRT is essentially light rail on rubber tires – offering almost identical services features and characteristics as light rail, but with a significantly lower cost. BRT is intended to move large numbers of people quickly and efficiently to their destinations.

FAST AND RELIABLE SERVICE

Dedicated lanes and signal priority

Could run as frequently as every 5 minutes

Stops every 1/2 mile to 1 mile (*less frequently than local bus*)

Real time travel information

CONVENIENT

Level boarding

Off-board fare collection

Multiple doors for quick boarding



INDY CONNECT

MODERN

Vehicles are often longer articulated and specially designed

Latest energy efficient technologies

COMFORTABLE

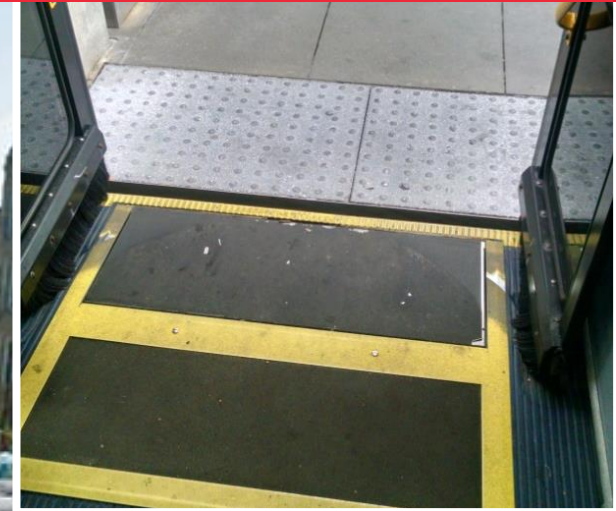
Spacious and comfortable interiors

Enhanced stations (*not stops*)

Amenities like Wi-Fi, bike racks, benches

WiFi

RAPID TRANSIT IS *FAST*



R E D

RAPID TRANSIT IS *FREQUENT*



R

E

D

RAPID TRANSIT IS *COMFORTABLE*



RAPID TRANSIT *SUPPORTS INVESTMENT*

\$5.5 BILLION
IN NEW INVESTMENT

resulting from the
EUCLID AVENUE STREETSCAPE
and BRT Project

\$480 MILLION
EXPANSIONS

\$860 MILLION
RENOVATIONS

\$2.8 BILLION
NEW DEVELOPMENT

RED LINE PHASE 1 OVERVIEW

RED LINE STATS

Vehicle: Electric Bus Rapid Transit

Station Type: Raised Platform

Station Spacing: 1/3 mile - 1 miles

Corridor Length: 13.6 miles

Station Amenities:

- » Purchase Tickets at the Station
- » Real Time Arrival Information
- » Seating, Shelter, Waste Receptacles, Security

Dedicated Lanes: 54%-62% of corridor

Frequency:

- » M-F: 1 bus / 10 - 15 min. (all day)
- » S-S: 1 bus / 20 min. (day) - 30 min. (evening)

Meridian Hills

Indianapolis

Red Line Recommendations Indy Connect | July 2015

- Recommended Red Line Stations
- Recommended Red Line Route
- Interstates
- Railroad Corridors
- 2016 Local Bus Routes
- Major Streets
- County Line
- Water
- Parks
- Municipalities

0 1 Mi

Physical Features

- 13.1 miles
- 28 station locations
- 60 percent dedicated lanes

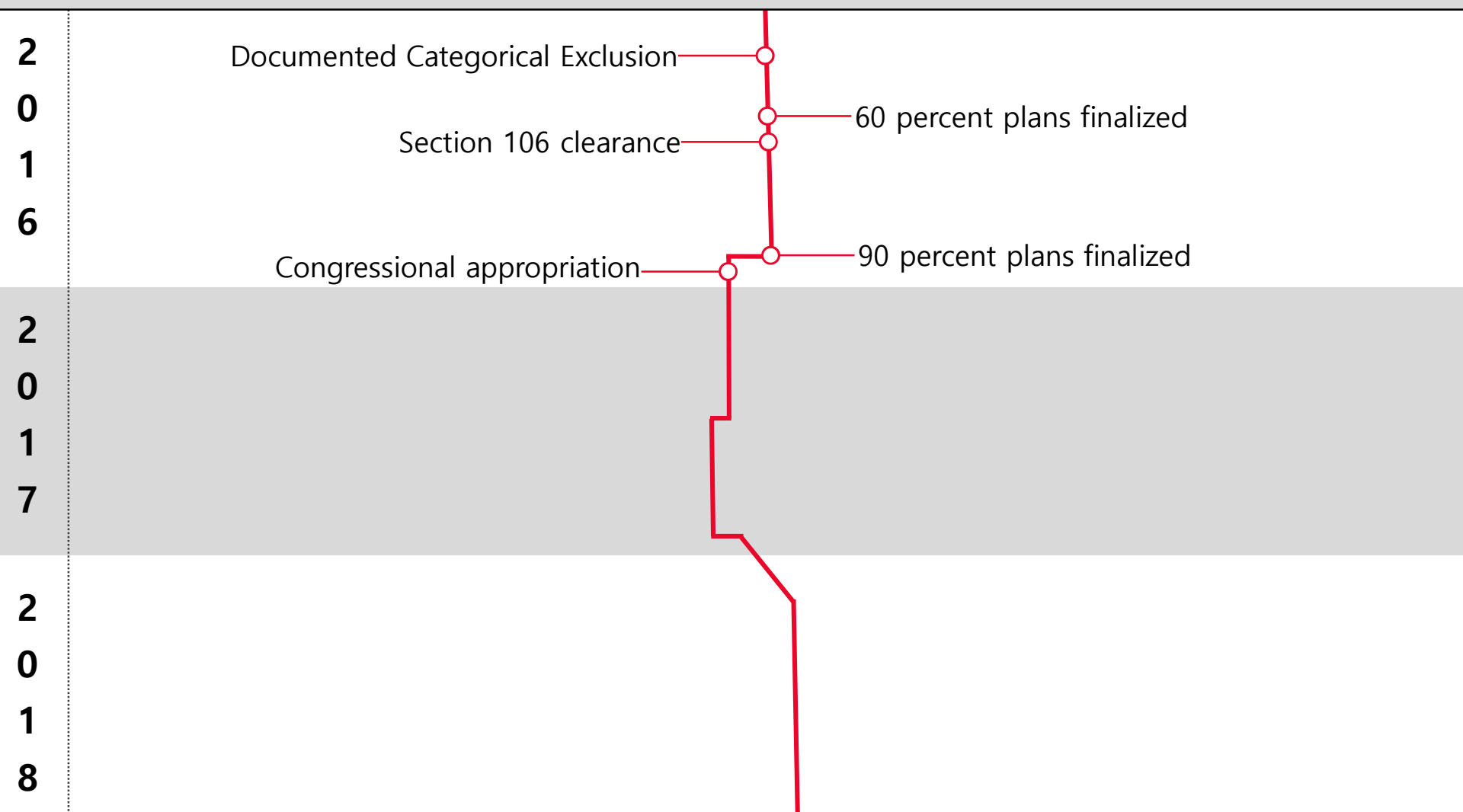
Operational Features

- 10 min headways
- 20 hours/day
- 1 out of every 4 jobs in MC

RED LINE PHASE 1 PROJECT TIMELINE

External Milestones and Considerations

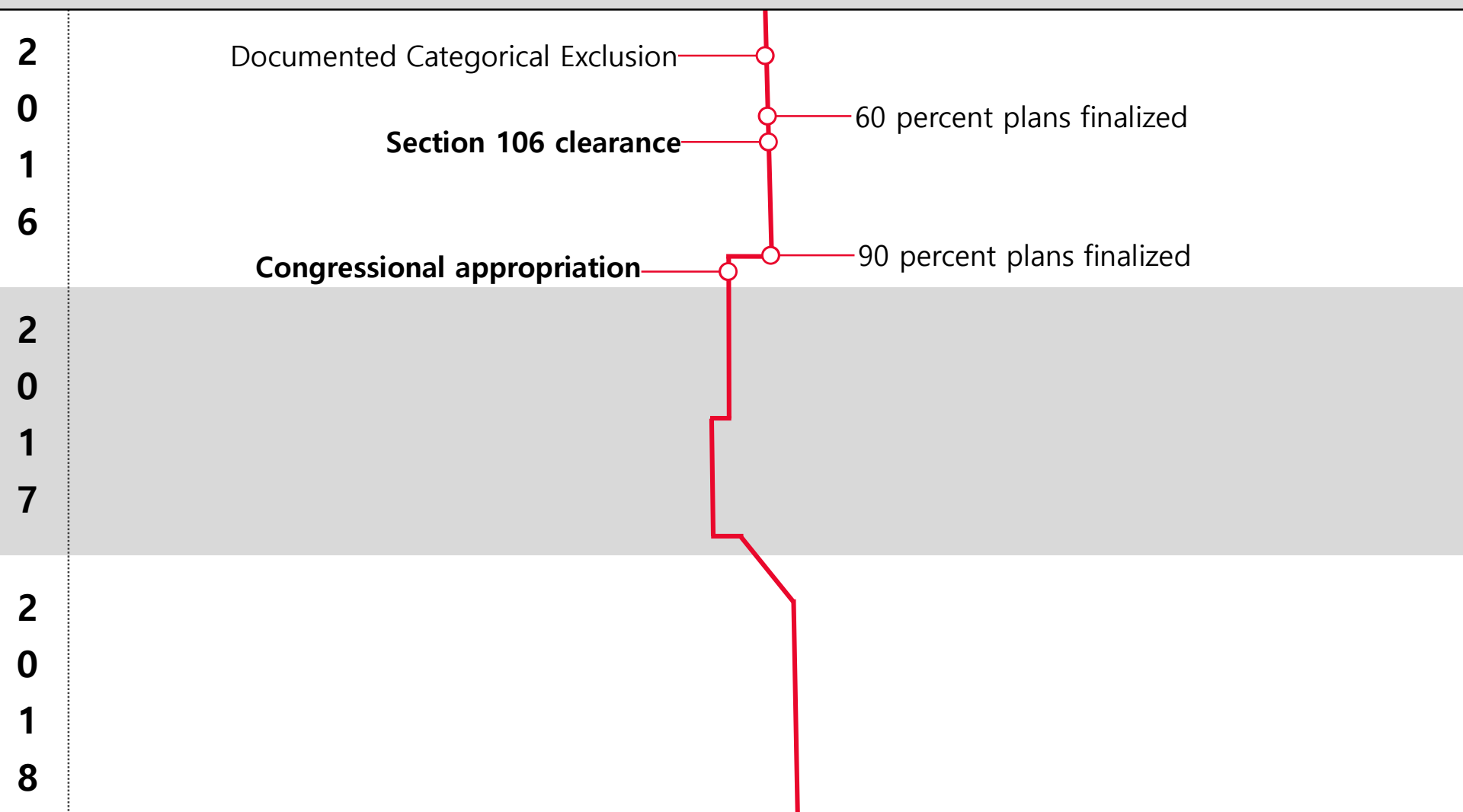
Internal Milestones



RED LINE PHASE 1 PROJECT TIMELINE

External Milestones and Considerations

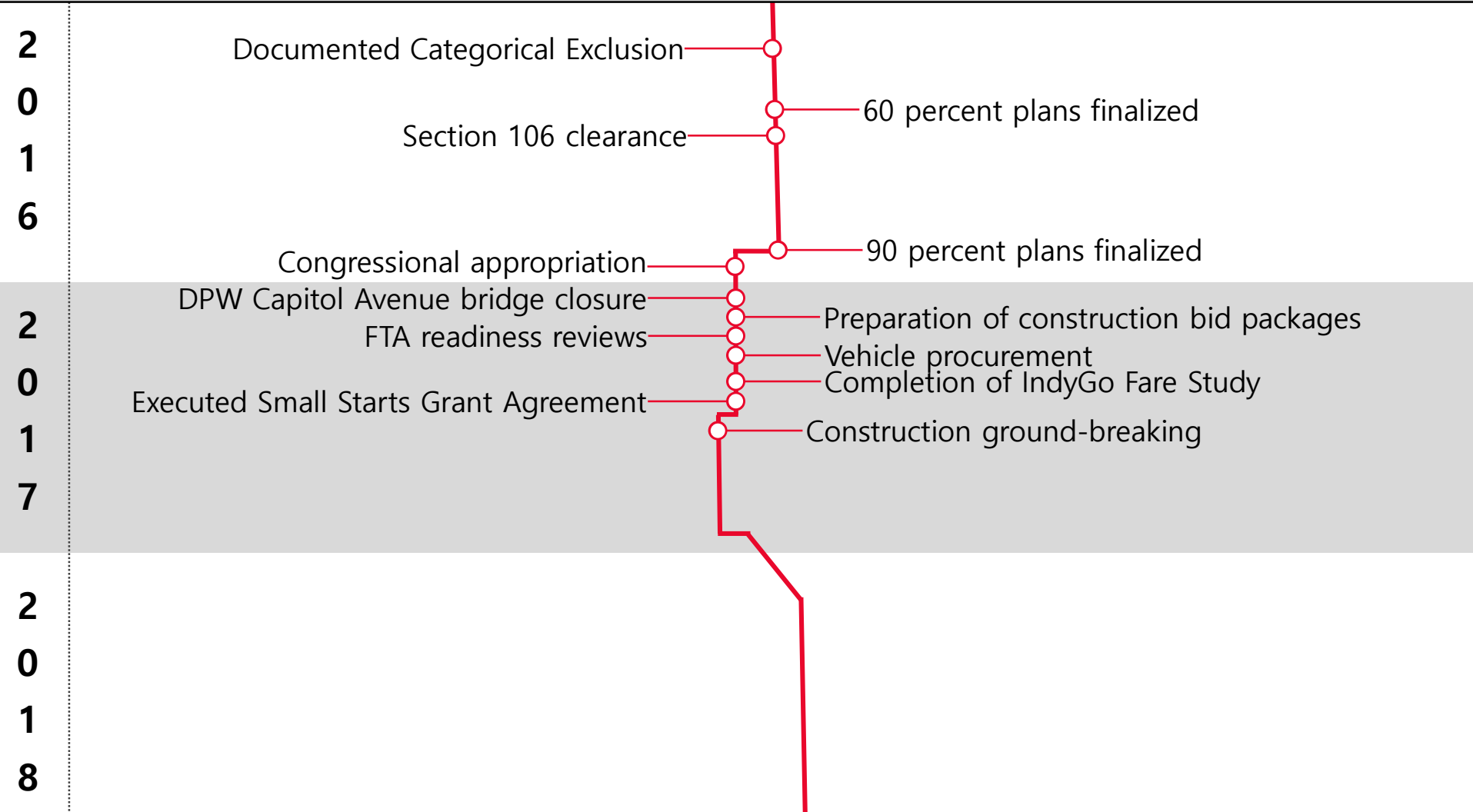
Internal Milestones



RED LINE PHASE 1 PROJECT TIMELINE

External Milestones and Considerations

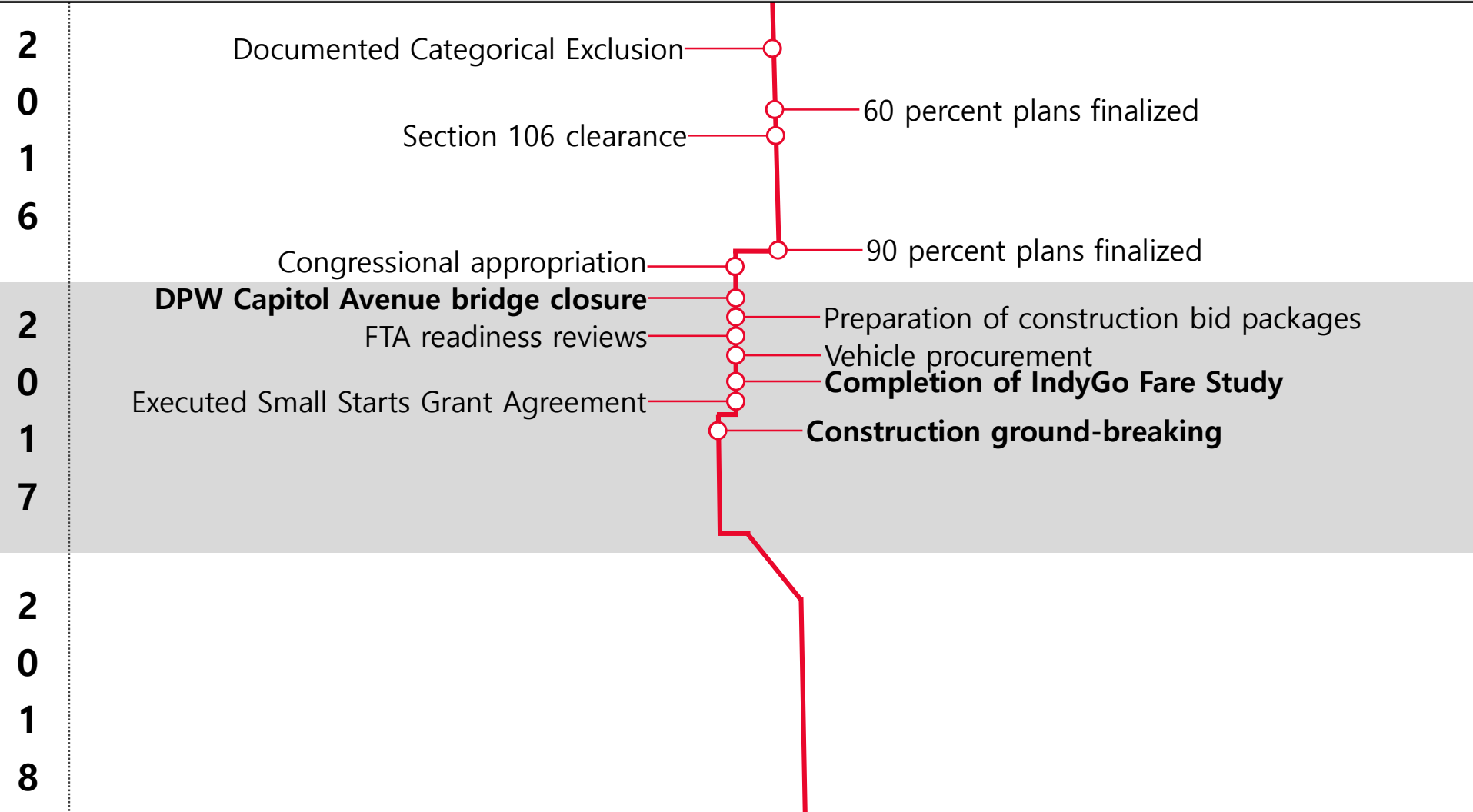
Internal Milestones



RED LINE PHASE 1 PROJECT TIMELINE

External Milestones and Considerations

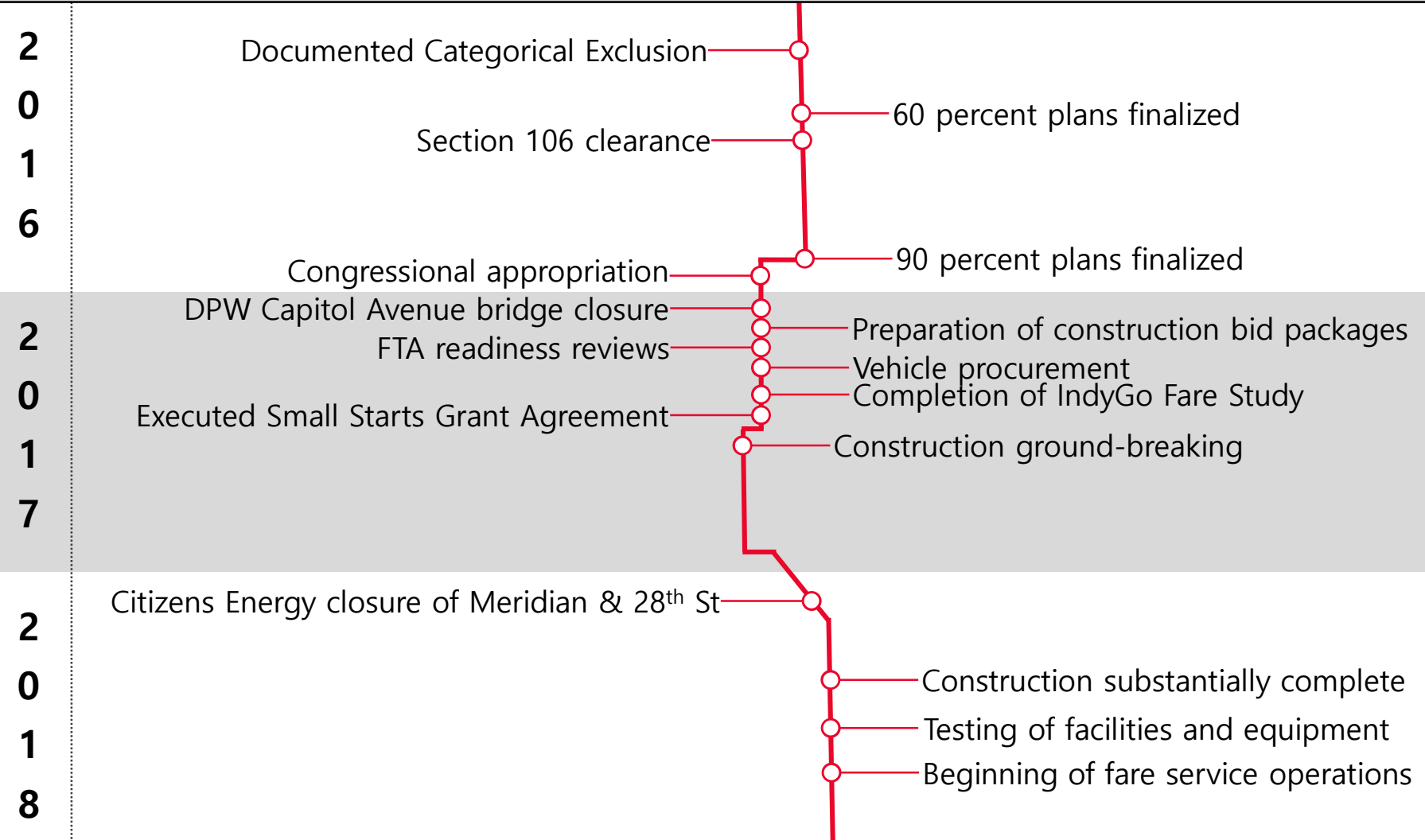
Internal Milestones



RED LINE PHASE 1 PROJECT TIMELINE

External Milestones and Considerations

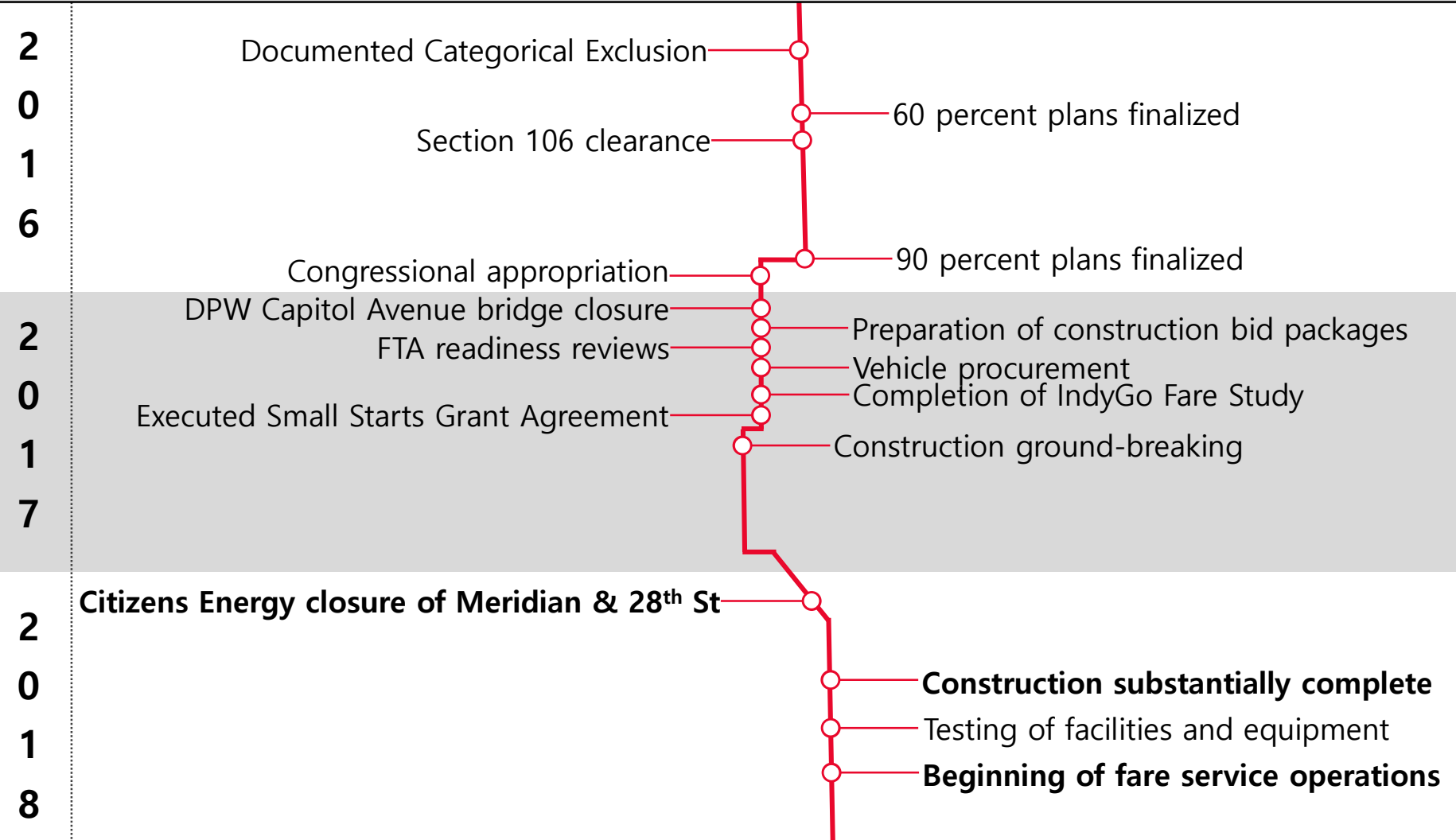
Internal Milestones



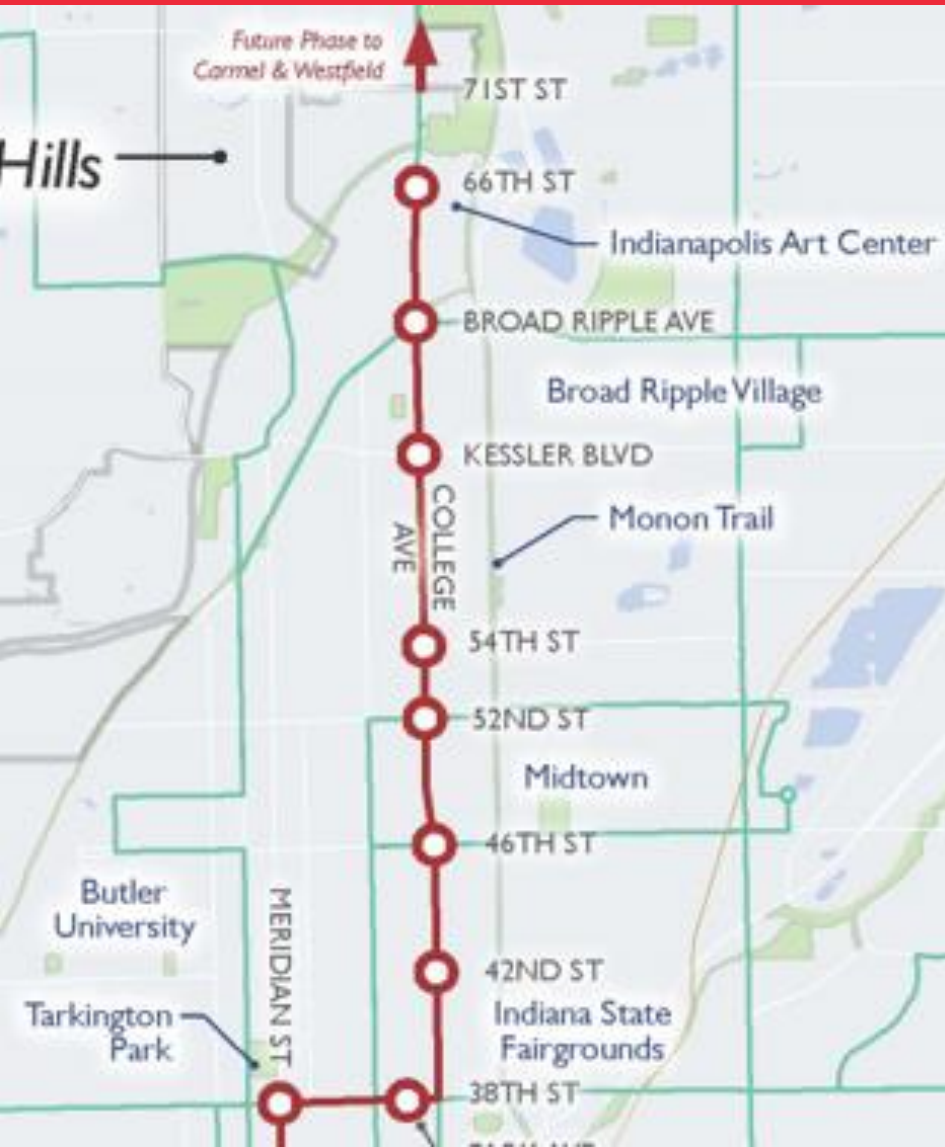
RED LINE PHASE 1 PROJECT TIMELINE

External Milestones and Considerations

Internal Milestones



STATION LOCATIONS: NORTH



Station Locations

- 66th Street
- Broad Ripple Avenue
- Kessler Boulevard
- 54th Street
- 52nd Street
- 46th Street
- 42nd Street
- 38th & Park
- 38th & Meridian

Station Orientation: Center

Travel Lanes: Dedicated lanes on College Ave; mixed traffic on 38th Street

STATION LOCATIONS: CENTRAL/DOWNTOWN



Station Locations

- Meridian & 34th Street
- Meridian & 30th Street
- Meridian & Fall Creek Boulevard
- Meridian & 22nd Street
- Meridian & 18th Street
- Capitol & 18th Street
- Capitol & 14th Street
- Capitol & 9th Street
- Capitol & Vermont Street
- State Capitol
- Downtown Transit Center
- Virginia & New Jersey

Station Orientation: Center (excl. Virginia)

Travel Lanes: Dedicated (excl. 18th and Virginia)

STATION LOCATIONS: SOUTH



Station Locations

- Fletcher Place (Virginia & Merrill)
- Fountain Square (Virginia & Woodlawn)
- Shelby & Pleasant Run Parkway
- Shelby & Raymond Street
- Shelby & Southern Avenue
- Shelby & Troy Avenue
- Shelby & Hanna Avenue

Station Orientation: Curbside

Travel Lanes: Mixed traffic

CONCEPTUAL STATION DESIGN: CENTER

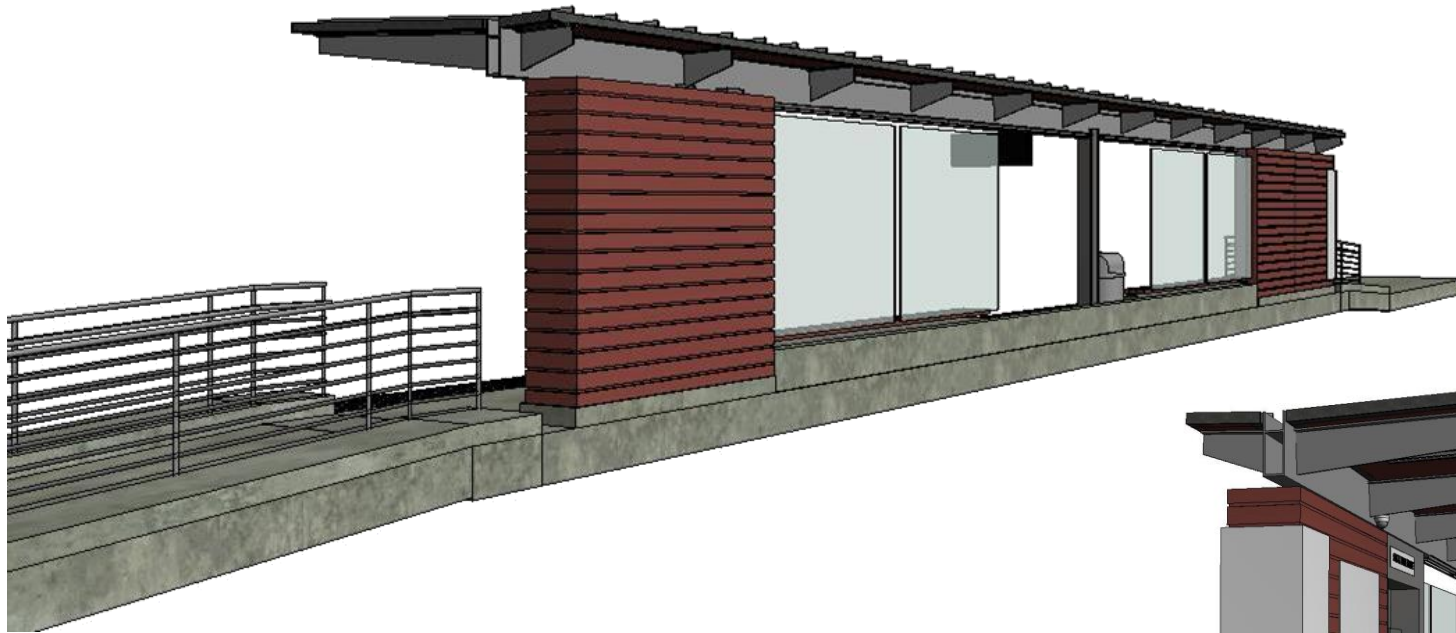


CONCEPTUAL STATION DESIGN: CENTER





CONCEPTUAL STATION DESIGN: CURBSIDE



**CDM
Smith**

IndyGo
SM

R

E

D

CONCEPTUAL STATION DESIGN: CURBSIDE

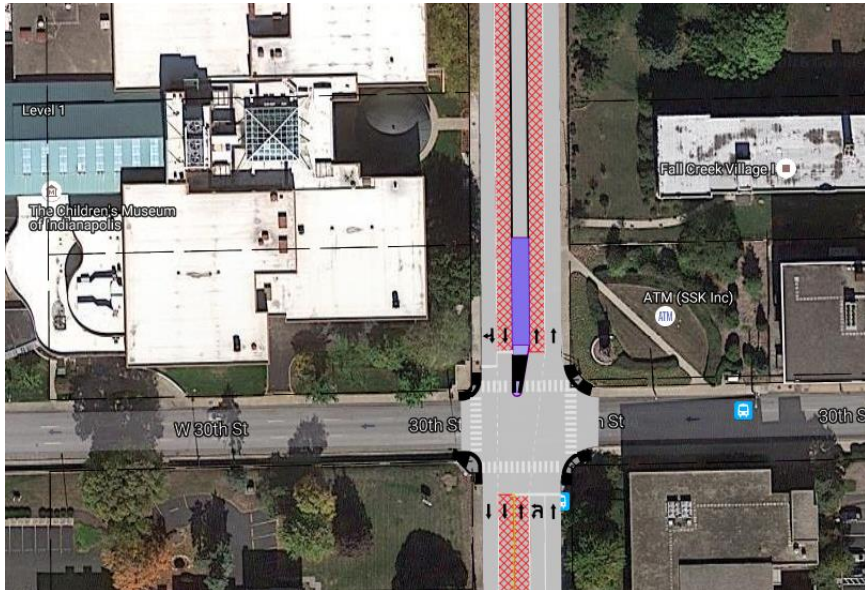


Boarding on either side of buses

- Allows boarding from left or right, depending upon station location
- Dedicated lanes will run in the same direction as traffic

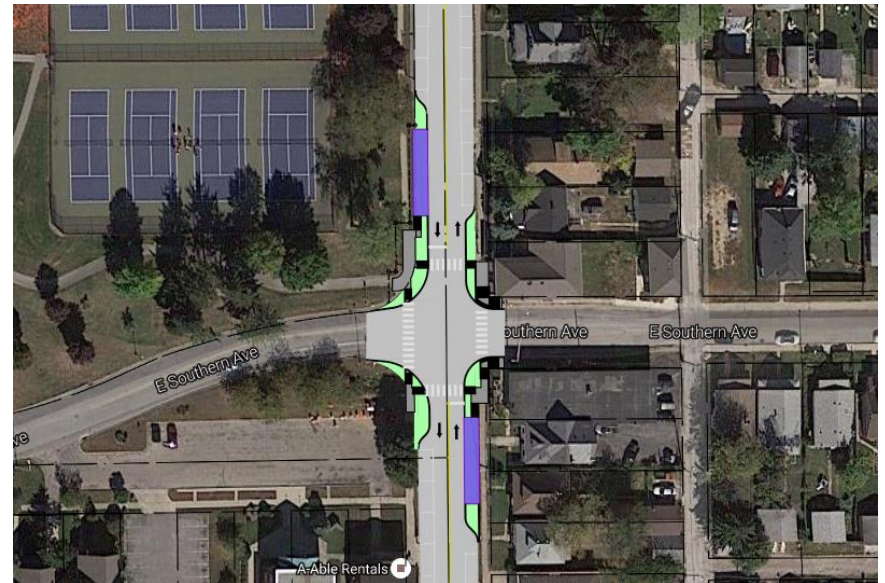
Center Stations

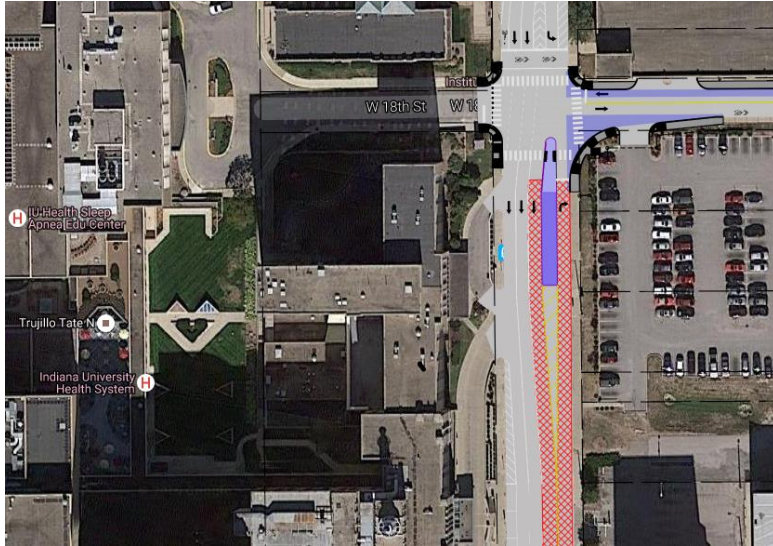
Boarding will occur on left



Curbside Stations

Boarding will occur on right



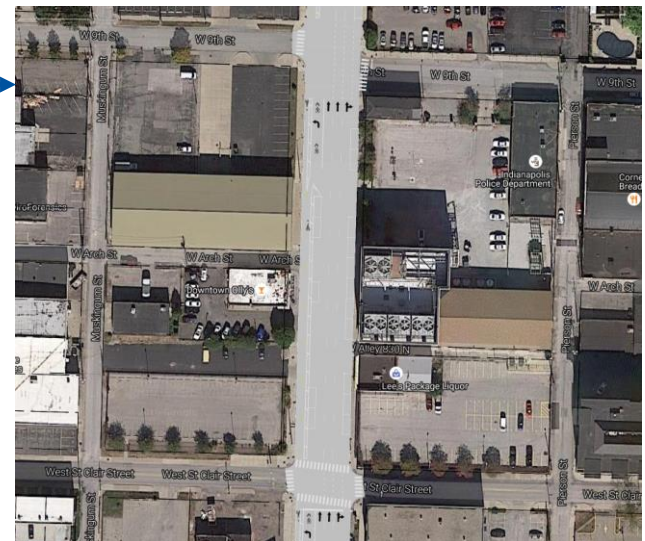
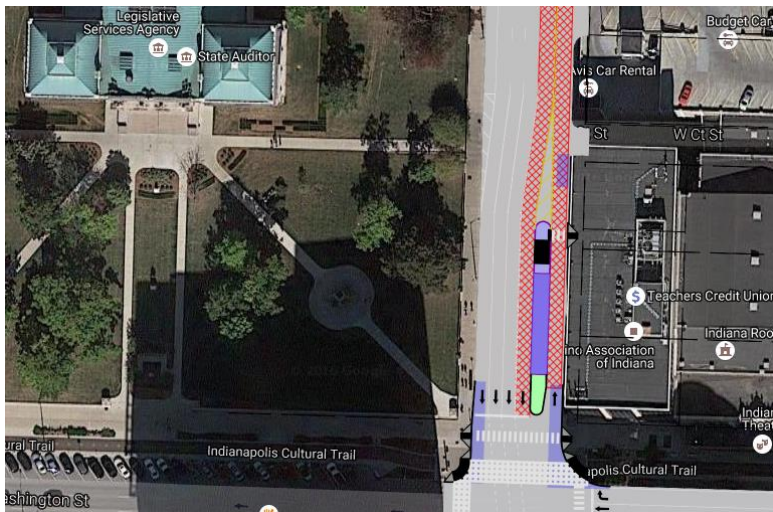


Capitol Avenue Alignment

- Switch from west to east side of street
- Retains one-way auto traffic with bi-directional bus lanes

Illinois Street cycle track

- Bi-directional cycle track on Illinois to retain southbound cycling infrastructure (offsets loss of Capitol Ave bike lane)



Business Impact Mitigation Strategies:

- 1. Anticipating and mitigating conflicts and concerns**
 - Phased construction to minimize impact
 - Business survey
 - Proactive outreach
- 2. Signage and Maintenance of Traffic**
 - Working with contractors to maintain open paths to businesses
 - Providing adequate signage about businesses and detours
- 3. Promotion and Patronization**
 - Web and social media updates
 - Explore opportunities to patronize impacted businesses
- 4. Exploring potential for financial support/loan program**

UPCOMING PUBLIC MEETINGS



North United Methodist Church

February 2, 2017; 6 p.m.

Indianapolis Public Library: Central Library

February 8, 2017; Noon & 6 p.m.



Tube Factory (Big Car)

February 15, 2017; 6 p.m.

R

E

D

THE RED LINE TEAM

IndyGo

Michael Terry, President/CEO

- Justin Stuehrenberg, Project Manager
- John Marron, Deputy Project Mgr
- LaTeeka Washington, Project Analyst
- Jerome Horne, Project Coordinator
- Cody Hedges, Graduate Assistant
- Bryan Luellen, Director of Public Affairs
- Lauren Day, Marketing + Comm. Mgr

HNTB (Construction Manager)

Kevin Campbell, Project Manager
Brad Miller, Deputy Project Manager
Jennifer Pyrz, Public Engagement

Public Engagement Staff

North: Jennifer Pyrz

HNTB

Central: John Andrews

Shiel Sexton

South: Jennifer Heltsley

Shrewsberry & Assoc.

Overall: Jerome Horne

IndyGo

CDM Smith (Project Designer)

Stephen Goodreau, Project Mgr
Michelle Gottschalk, Dep. PM

INDYGO RED LINE

STAKEHOLDER ENGAGEMENT

QUARTERLY MEETING

11.16.2016

I) WELCOME AND INTRODUCTIONS

JUSTIN STUEHRENBURG

II) PRESENTATION

JOHN MARRON

III) DISCUSSION, QUESTION, AND ANSWERS

RED LINE TEAM

IV) GEOGRAPHIC BREAKOUTS

RED LINE TEAM