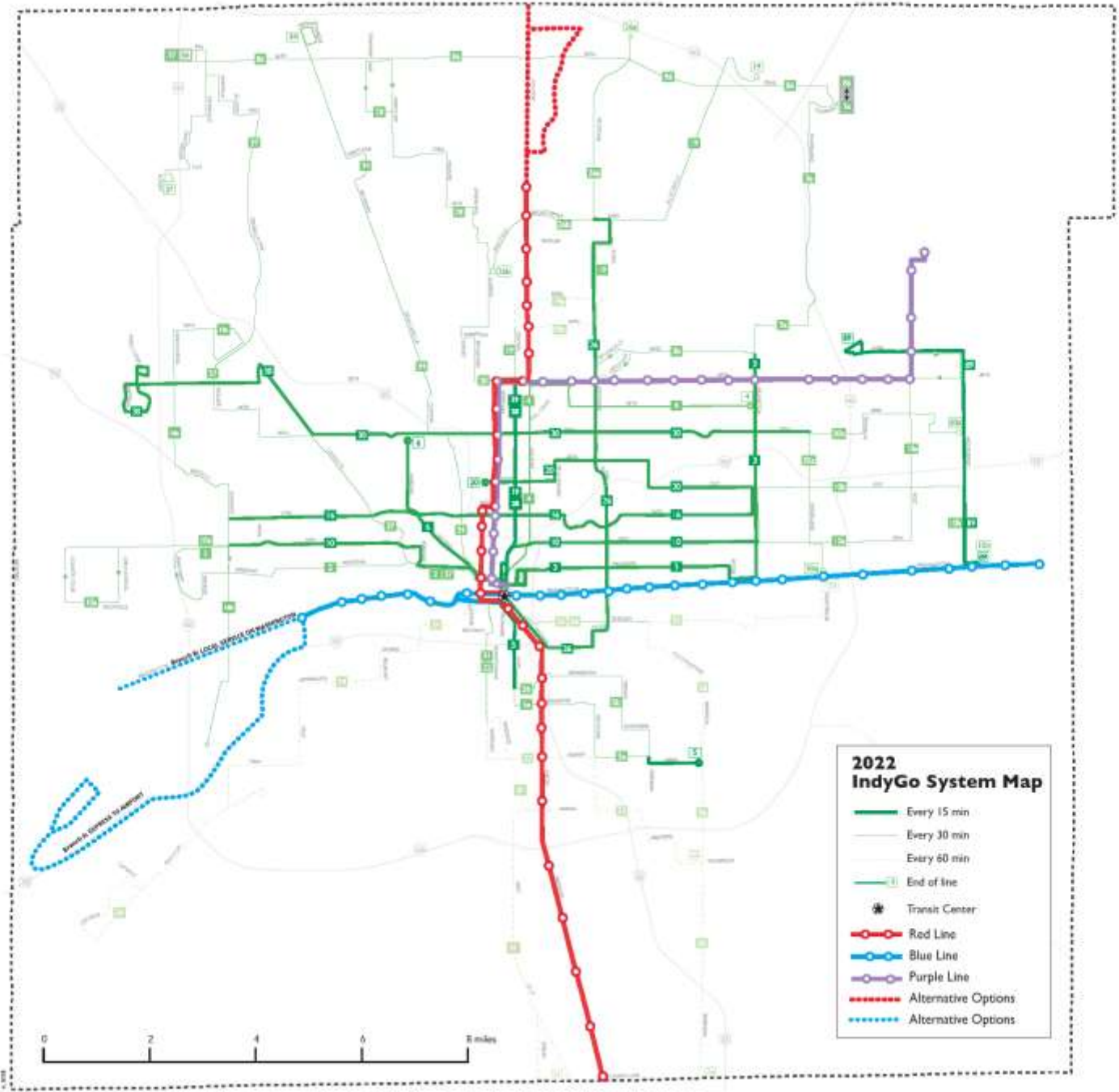


Purple Line Rapid Transit

Summer 2018

*IndyGo*SM





ANTICIPATED TIMELINES

open for service 
construction 
design & public input 

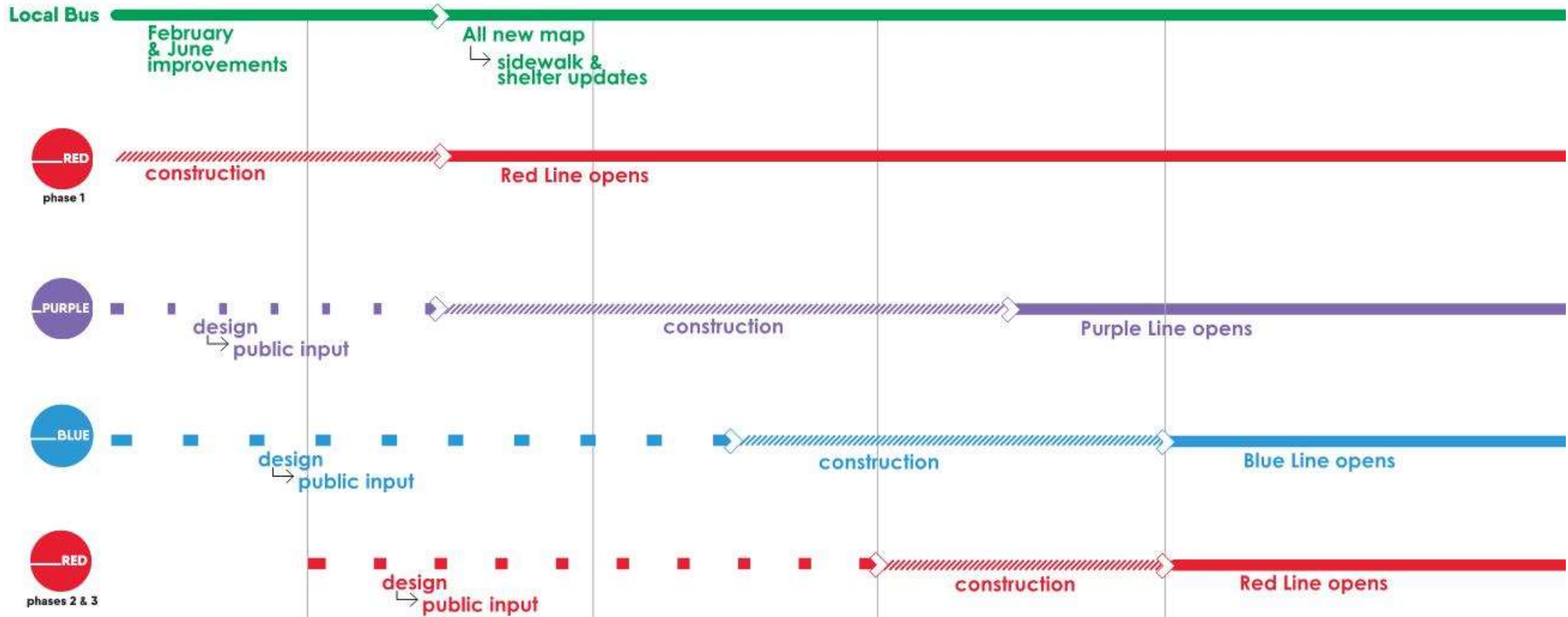
2018

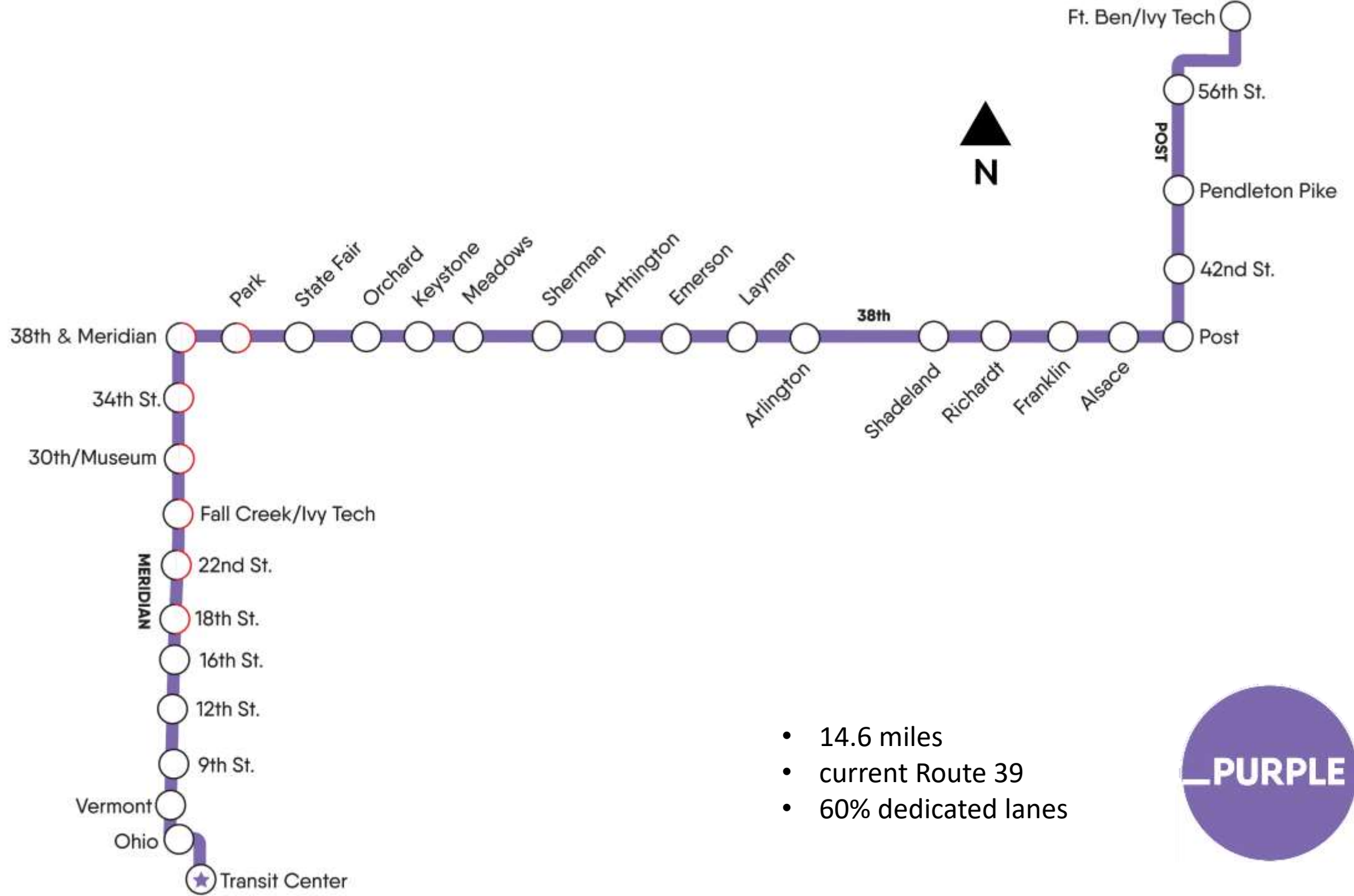
2019

2020

2021

2022





- 14.6 miles
- current Route 39
- 60% dedicated lanes





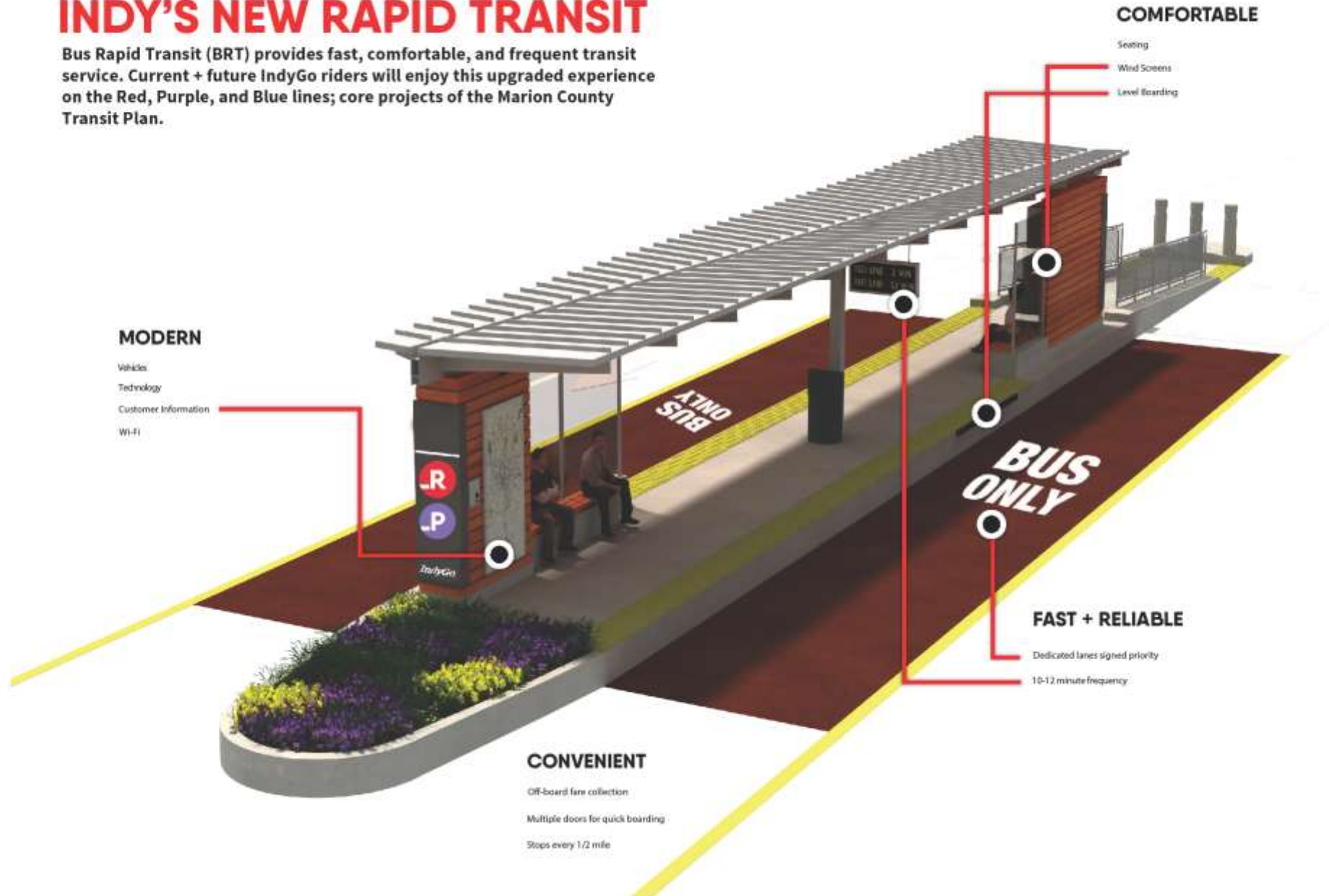
ADDED VALUE to infrastructure

- Improvements to:
 - Sidewalks
 - Drainage
 - Pavement
 - Traffic Signals

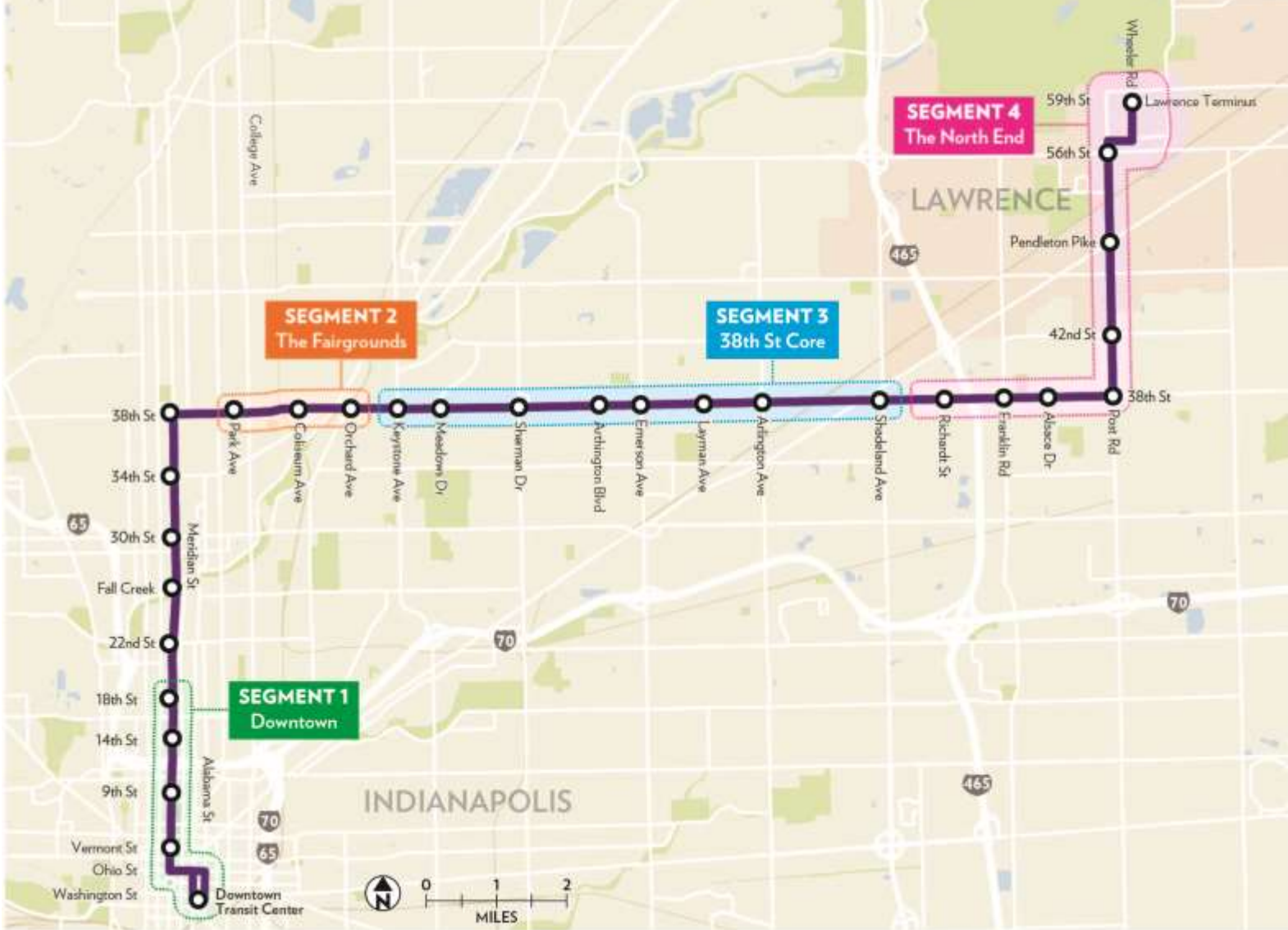
WHAT IS BRT?

INDY'S NEW RAPID TRANSIT

Bus Rapid Transit (BRT) provides fast, comfortable, and frequent transit service. Current + future IndyGo riders will enjoy this upgraded experience on the Red, Purple, and Blue lines; core projects of the Marion County Transit Plan.



PURPLE LINE – SEGMENT BREAKDOWN



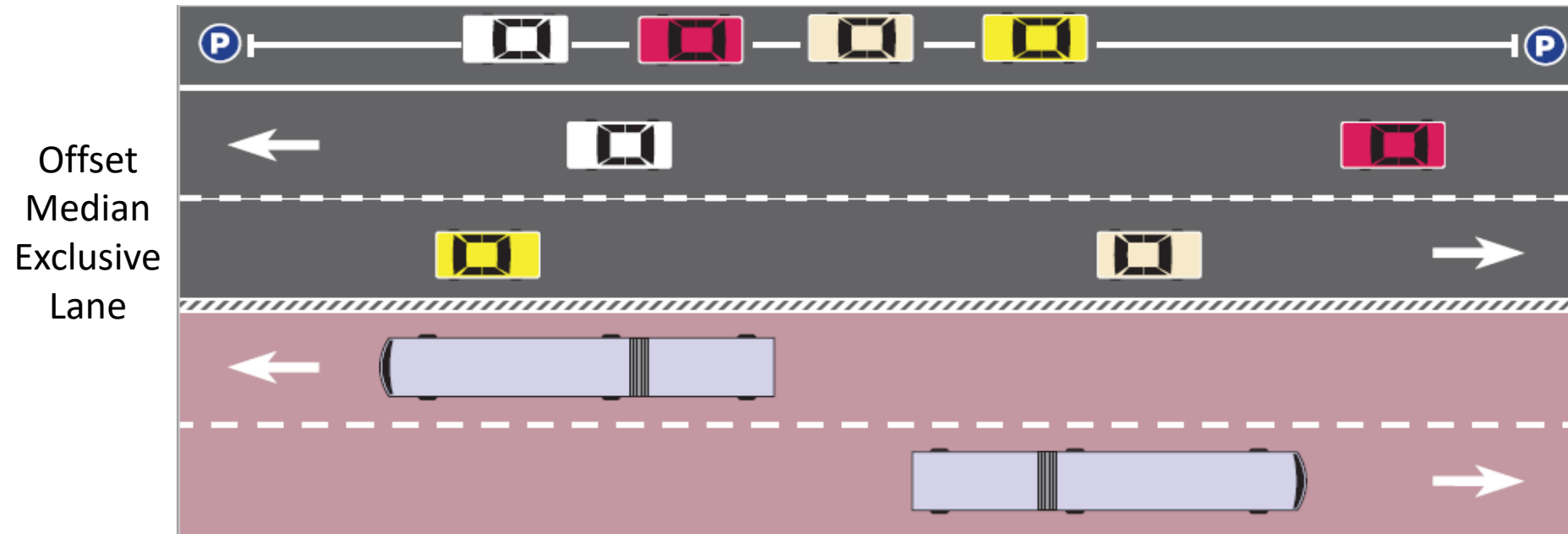


DOWNTOWN SEGMENT – CHALLENGES

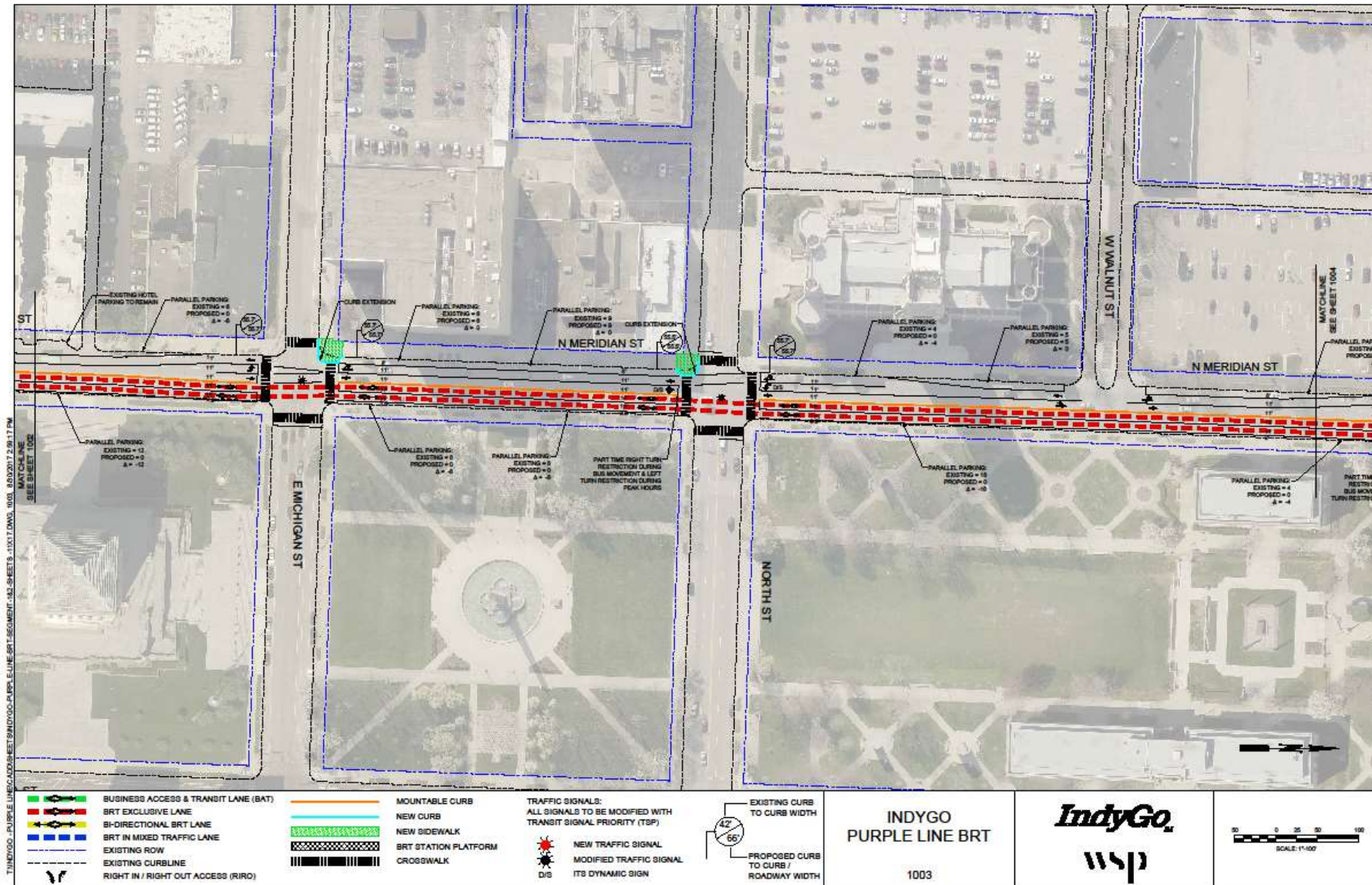
- Downtown Parade Routes
- War Memorial Mall
- Curbside Parking



DOWNTOWN SEGMENT: MERIDIAN ST.



DOWNTOWN SEGMENT: PLANS



DOWNTOWN SEGMENT: CENTRAL LIBRARY





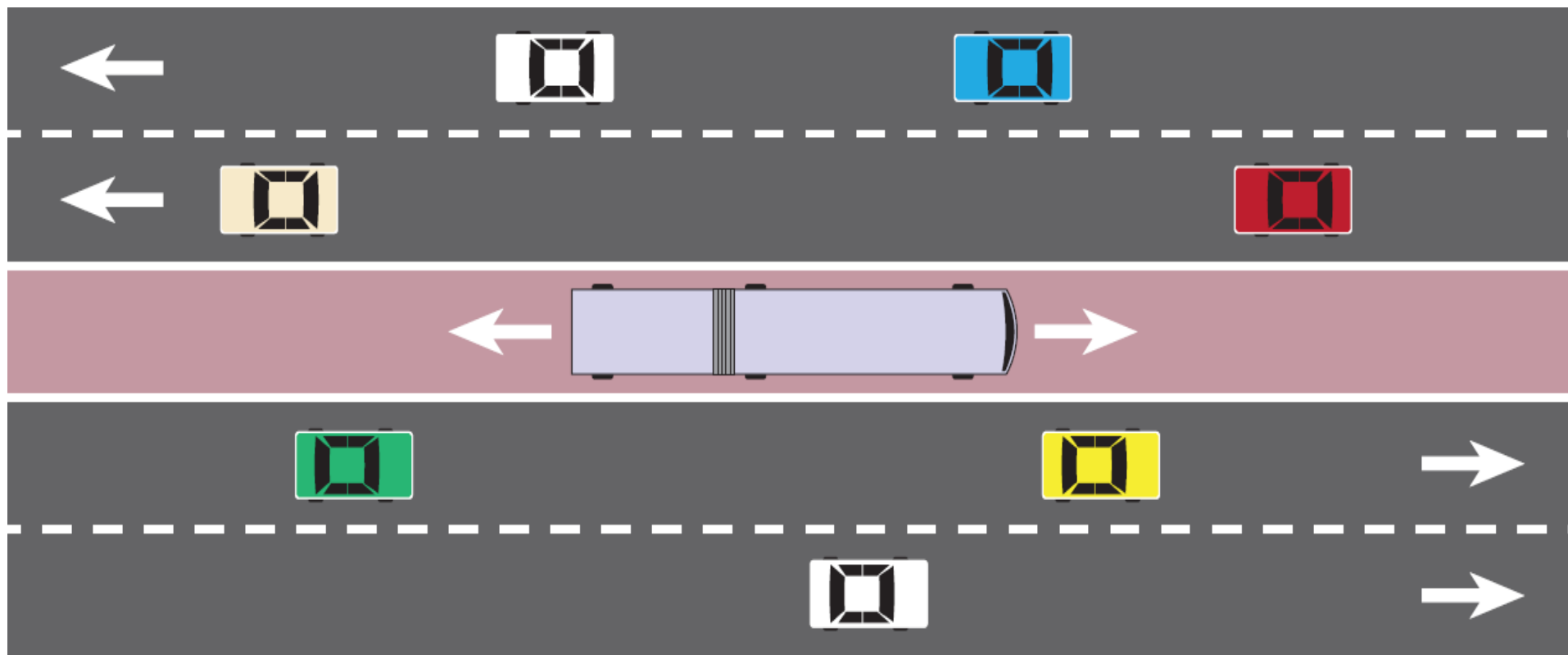
FAIRGROUND SEGMENT – CHALLENGES

- Fairground ingress/egress traffic
- Station siting
- Avoid costly widening

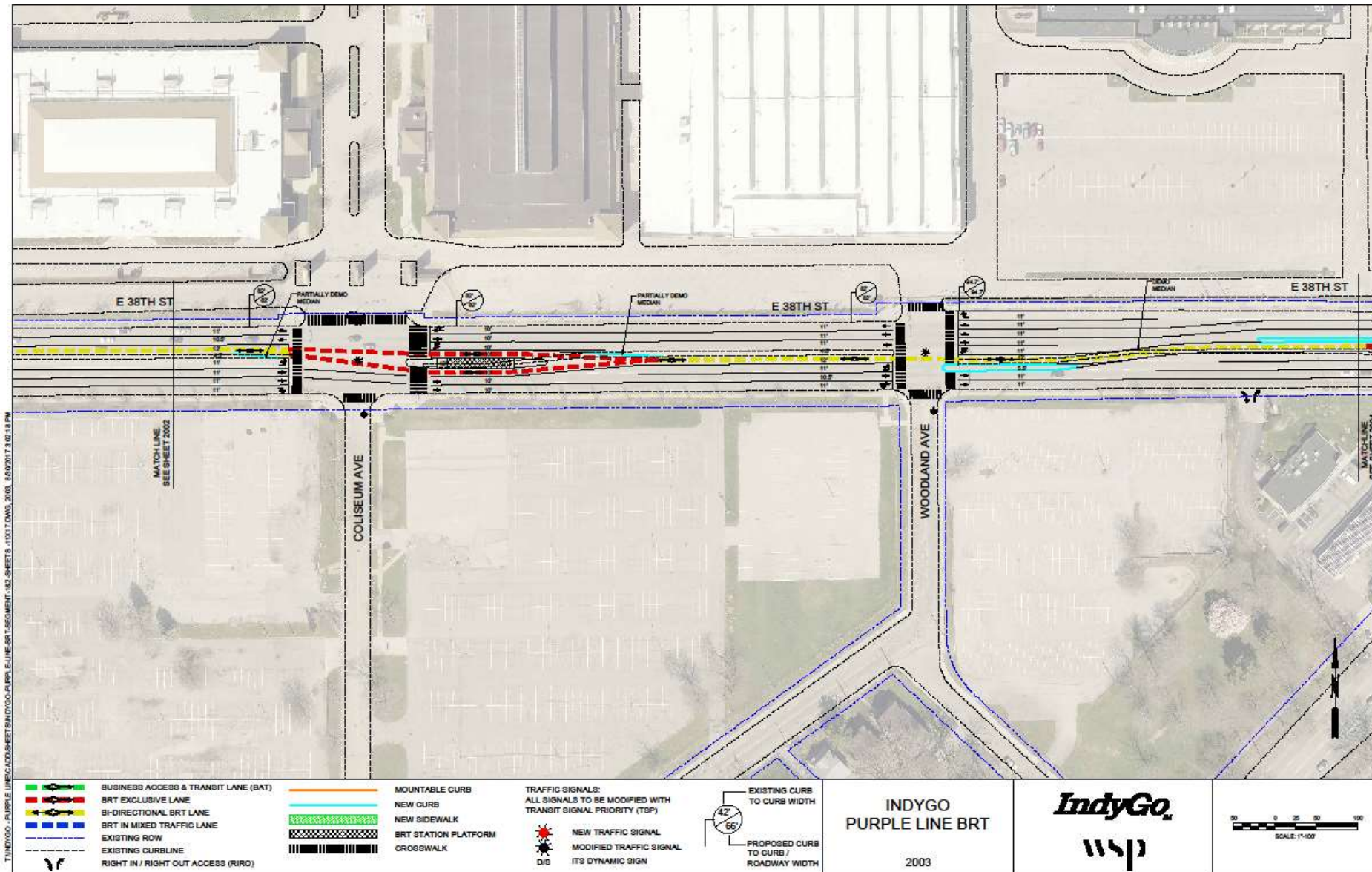


FAIRGROUND SEGMENT: BI-DIRECTIONAL LANE

Guilford Avenue to Fall Creek Parkway Drive



FAIRGROUND SEGMENT: PLANS



FAIRGROUND SEGMENT: STATION

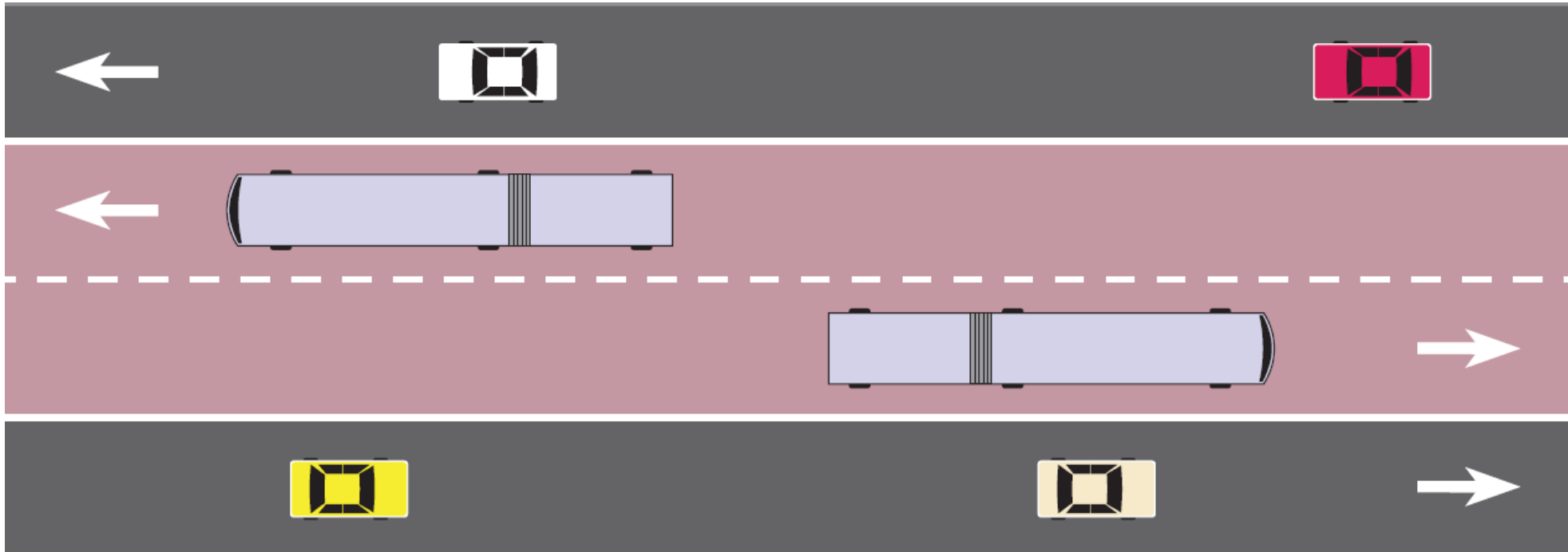


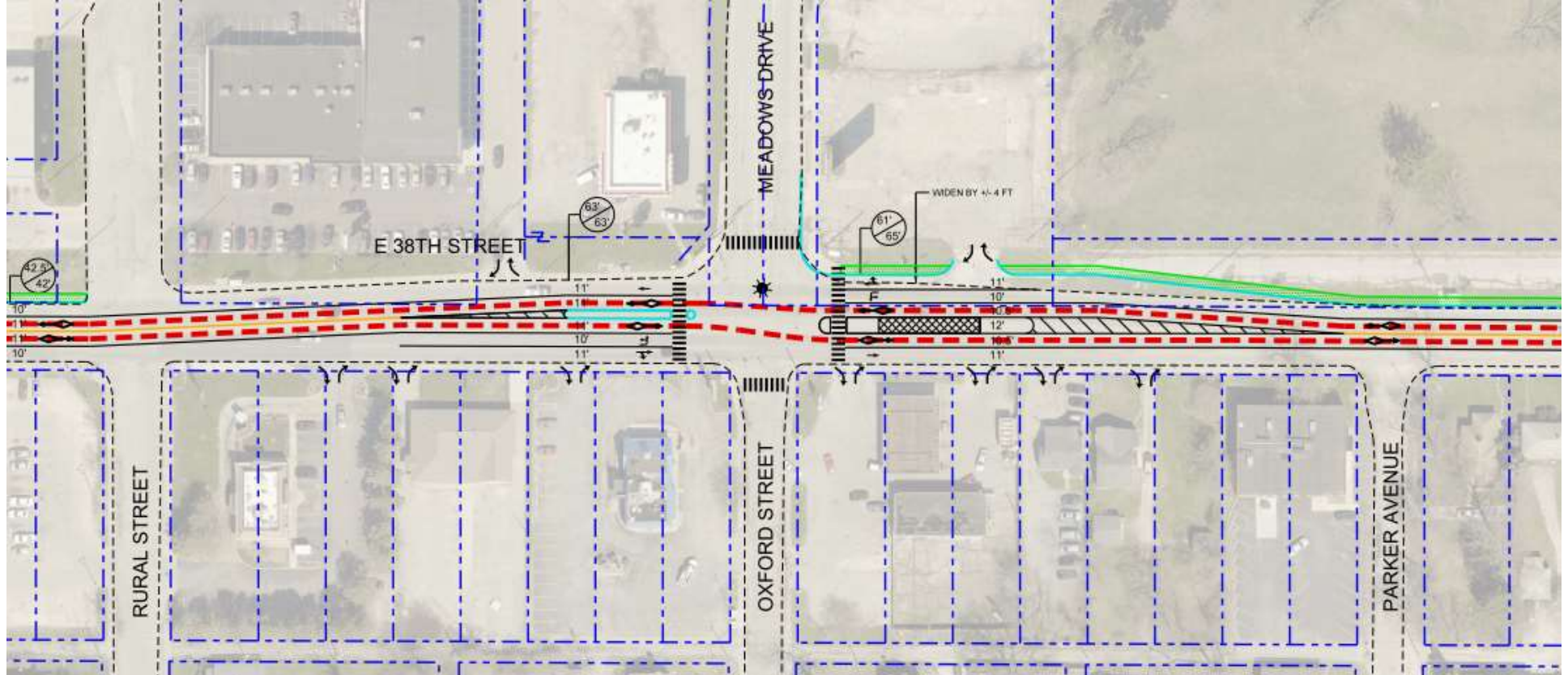
38th Core Segment – CHALLENGES

- Long sections of missing sidewalk
- Narrow cross sections and deteriorating pavement
- Left turn access and corridor safety



38TH STREET CORE: EXCLUSIVE CENTER LANES





LEFT TURNS AND U-TURNS

- Why are there left turn restrictions?
- Protected U-turns at signalized intersections
- Additional Signals to minimize inconvenience



LEFT TURNS AND U-TURNS: SAFETY BENEFITS

- East 38th Street has one of the highest crash rates in the entire Indy region
- 986 crashes, 4 fatalities, and 27 incapacitating injuries from 2013-2015
- 42% of crashes are the types that would be eliminated or significantly reduced by limiting left turns





TACO BELL
Drive Thru

2900 E
Oxford St

BUS ONLY

LEFT ON GREEN
"WINDOW ONLY"



BUS ONLY



LEFT ON GREEN ARROW ONLY



Oxford St

CLARK

3.39
5.59





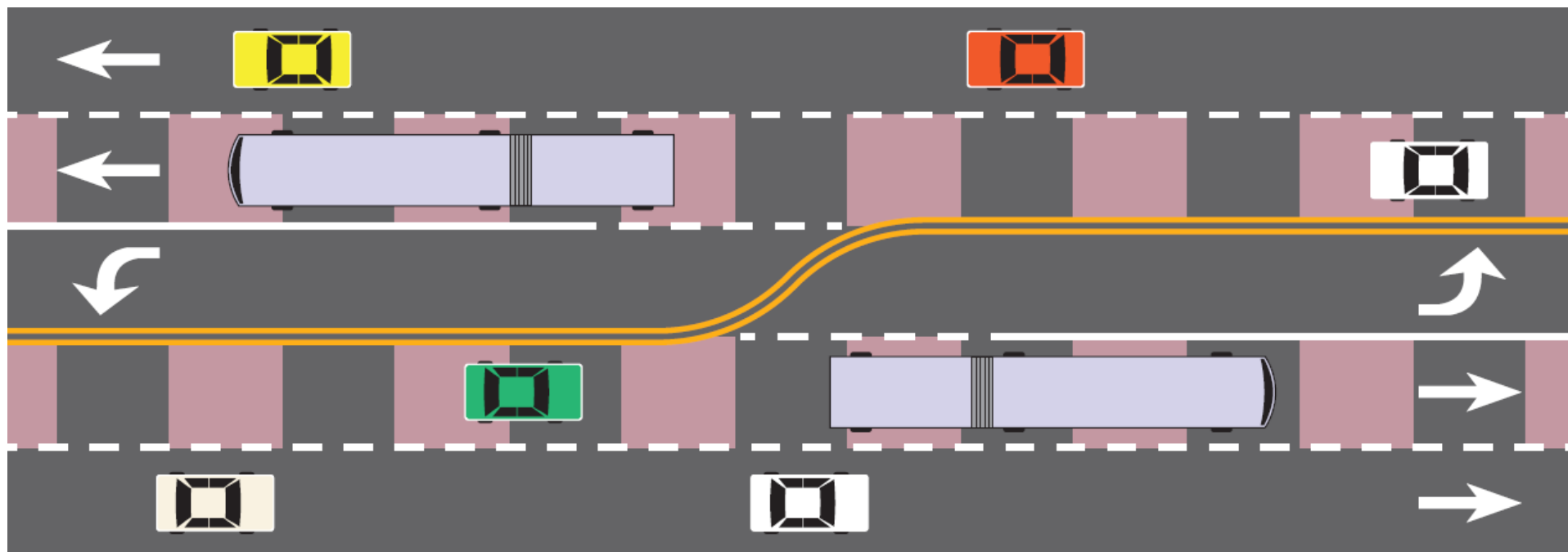
Lawrence segment: challenges

- Areas of missing sidewalk
- CSX Rail at-grade crossing
- Left turn access and larger cross section



LAWRENCE SEGMENT: LEFT LANE BAT

Left Hand BAT Lane



PROPOSED LEFT-TURN ACCESS WITH BRT



More Information:

www.IndyGoPurple.com

317-635-3344

www.IndyGo.net

@IndyGoBus

